

# CERTIFICATE OF LOCATION OF GOVERNMENT CORNER

County of Anoka

State of Minnesota

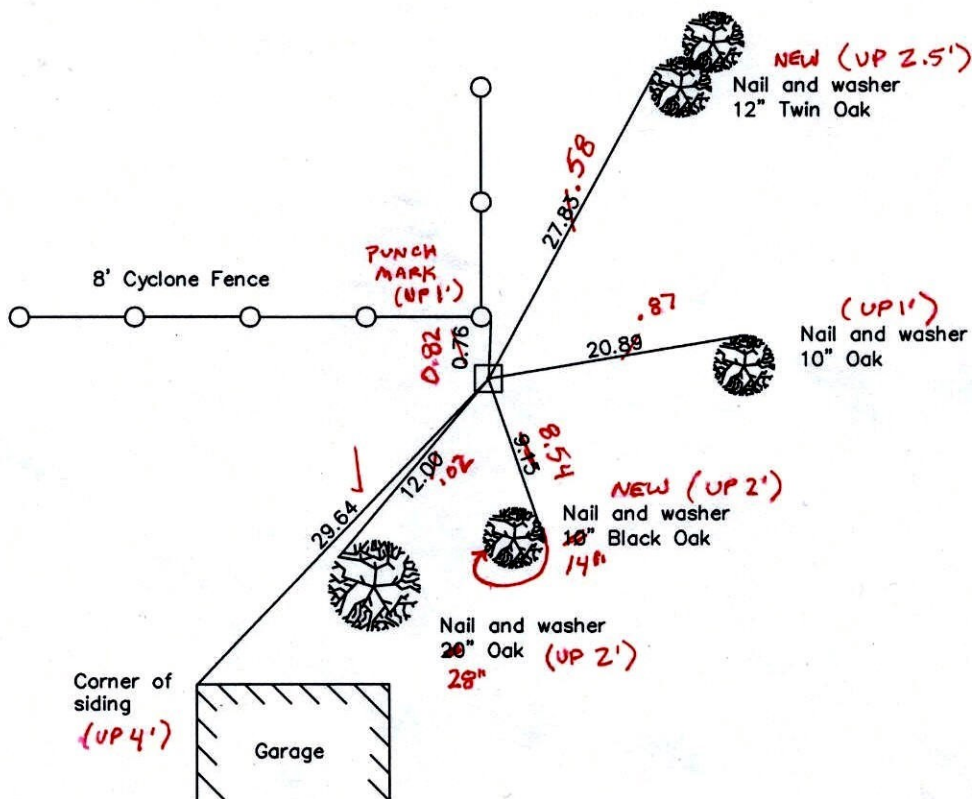
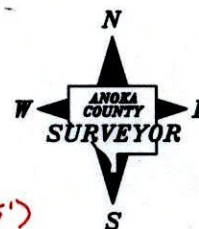
East 1/4 Corner of Sec. 29 Township 32 Range 23

I hereby certify that on the 13th day of September, 1960, I found the described corner which was evidenced by a granite monument

and I further certify that to perpetuate the location of said corner, I did, at the exact location thereof, place a permanent marker consisting of the existing granite monument ✓

(UP 0.3')

which reference or witness monuments are located in the manner following:



3/9/11  
BK-SH-SS  
TAPED

Revised date

6/16/92
8/21/96
12/12/01

N.A.D. 1983 Coordinates  
(1996 adjustment)

County Project Coordinates	State Plane Coordinates
Northing <u>172231.1381</u>	Y _____
Easting <u>510826.6042</u>	X _____

Date 12/12/01

# CERTIFICATE OF LOCATION OF GOVERNMENT CORNER

County of Anoka

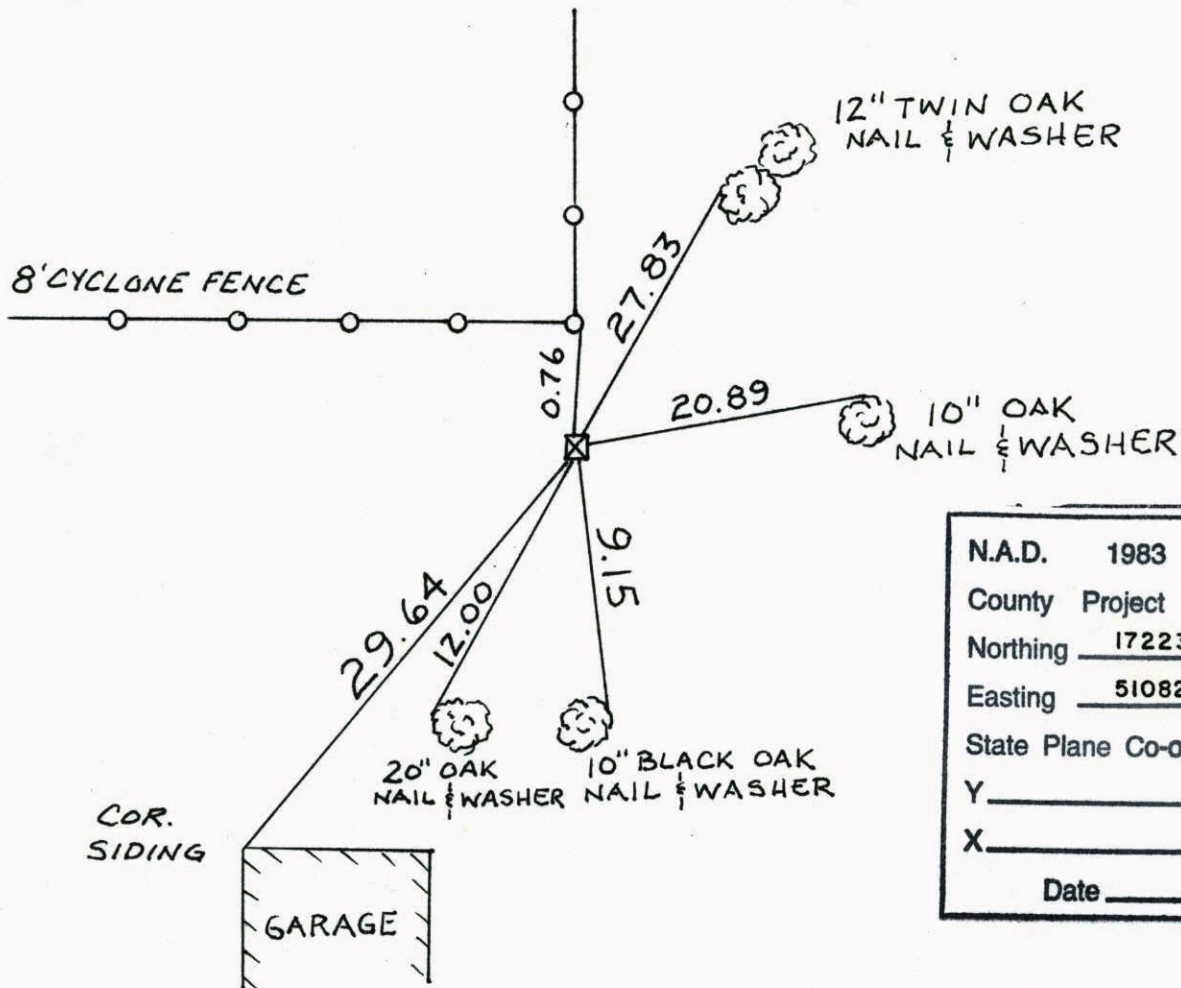
State of Minnesota

EAST 1/4 Corner of Sec. 29 Township 32 Range 23

I hereby certify that on the 13 day of SEPT., 1960, I found the described corner which was evidenced by GRANITE MONUMENT

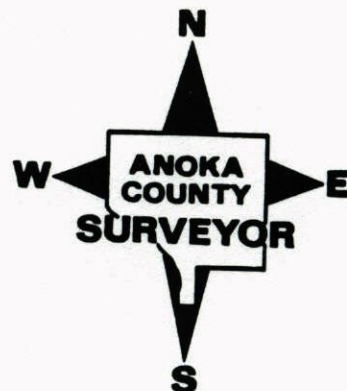
and I further certify that to perpetuate the location of said corner, I did, at the exact location thereof, place a permanent marker consisting of SAME

which reference or witness monuments are located in the manner following:



N.A.D.	1983	Co-ordinates
County	Project	Co-ordinates
Northing	<u>172231.1381</u>	
Easting	<u>510826.6042</u>	
State Plane Co-ordinates		
Y	_____	
X	_____	
Date	_____	

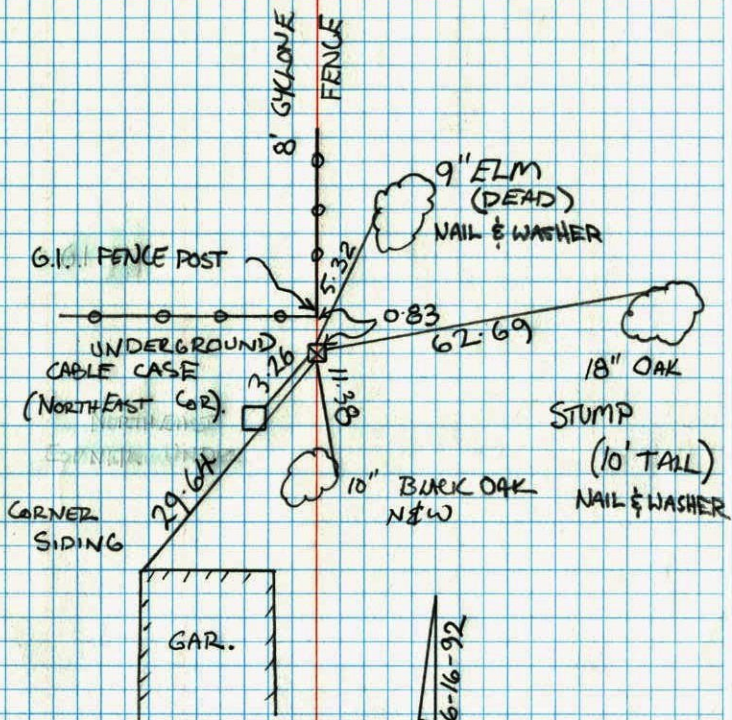
Revised date	Revised date	Revised date
<u>6-16-92</u>		
<u>8-21-96</u>		
<u>12-12-01</u>		





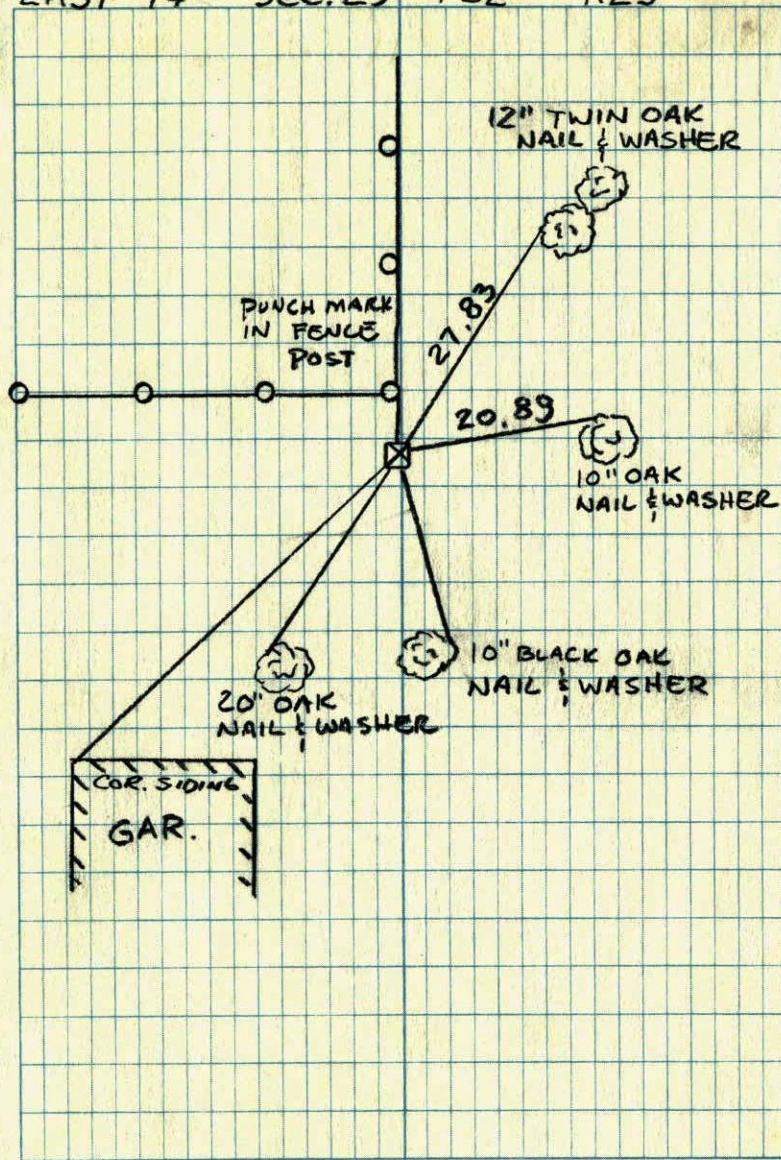
RETIE EAST 1/4 COR SEC 29 T32 R23

GRANITE MONUMENT



B. KLEMZ  
M. STEWART

EAST 1/4 SEC. 29 T32 R23



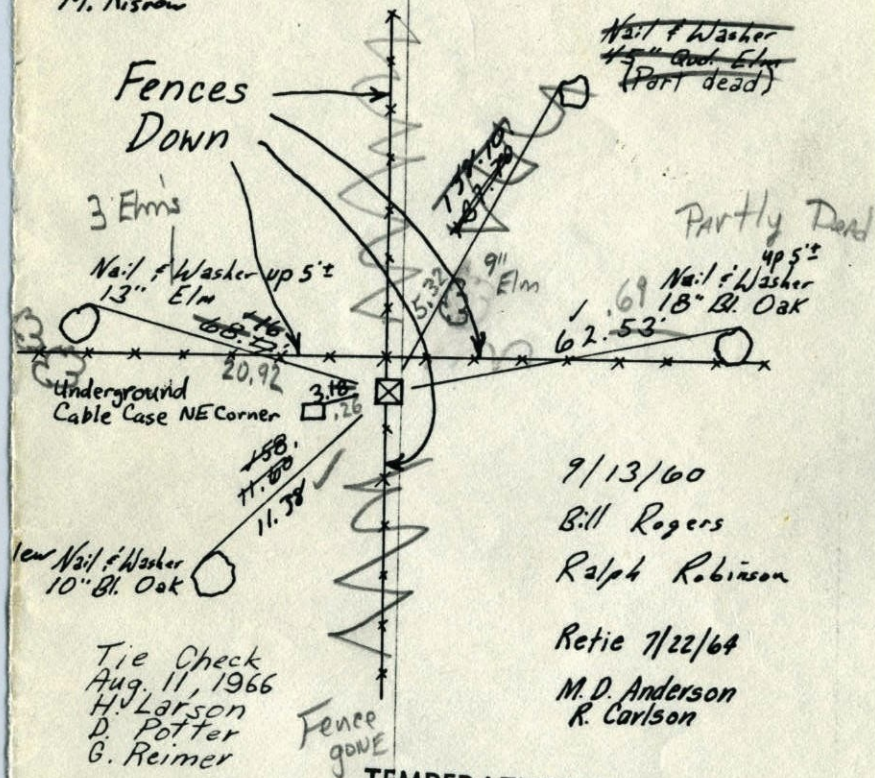


103  
E 1/4 Cor. Sec 29-T32-R23

Granite Stone Mon.

Up .8'

Tie Check  
June 19, 1978  
D. Dahl  
B. Sannerud  
M. Kisorow



9/13/60  
Bill Rogers  
Ralph Robinson

Retie 7/22/64  
M.D. Anderson  
R. Carlson

TEMPERATURE CORRECTED  
AND HORIZONTALLY  
TAPED MEASUREMENTS

Tie Check  
June 19, 1975  
D. Dahl  
B. Sannerud  
G. Adams

Tie Check  
7-11-84 \*  
G. Lips  
R. Bennett  
D. Ross

New Tape  
ROLAND W. ANDERSON  
COUNTY SURVEYOR  
ANOKA COUNTY, MINNESOTA

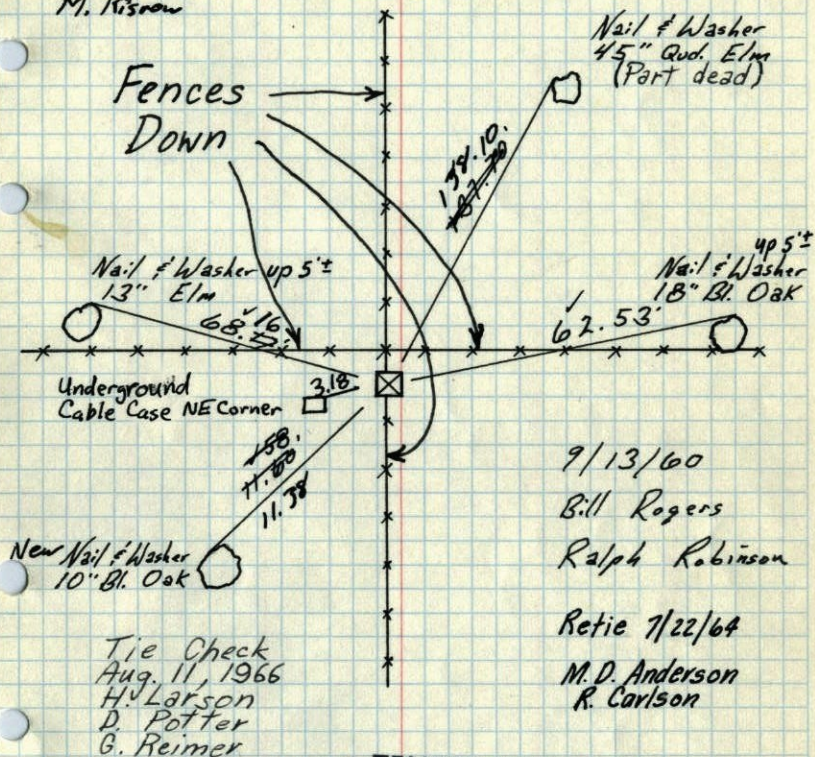
103

E 1/4 Cor. Sec 29-T32-R23

Granite Stone Mon.

Up .8'

Tie Check  
June 19, 1978  
D. Dahl  
B. Sannerud  
M. Kisorow



9/13/60  
Bill Rogers  
Ralph Robinson

Retie 7/22/64  
M.D. Anderson  
R. Carlson

TEMPERATURE CORRECTED  
AND HORIZONTALLY  
TAPED MEASUREMENTS

Tie Check  
June 19, 1975  
D. Dahl  
B. Sannerud  
G. Adams

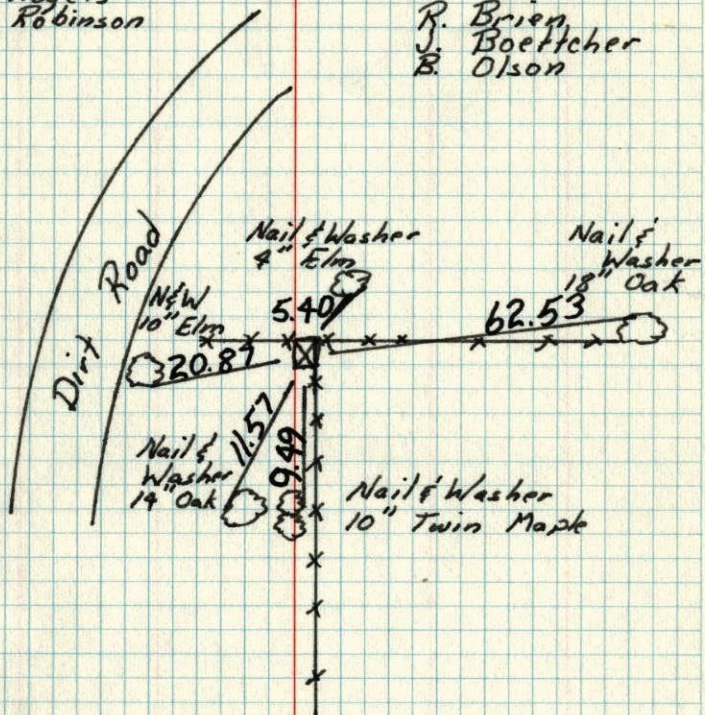
ROLAND W. ANDERSON  
COUNTY SURVEYOR  
ANOKA COUNTY, MINNESOTA



E 1/4 Cor. Sec 29-T32-R23

Granite Monument up 0.8'

September 13, 1960

B. Rogers  
R. RobinsonTie Check  
June 22, 1971R. Brien  
J. Boettcher  
B. Olson

E 1/4 Cor. Sec 29-T32-R23

Granite Monument up 0.8'

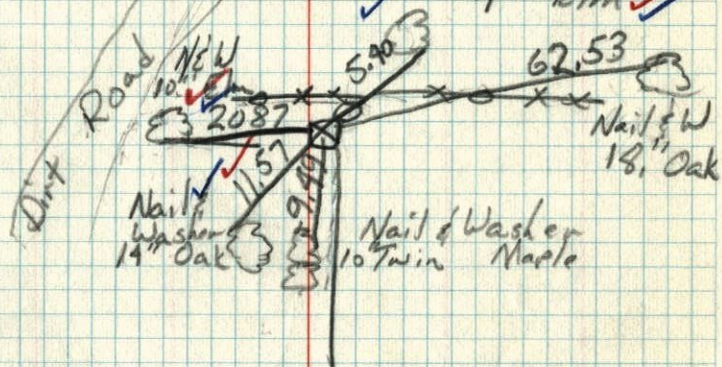
#12 - 80°

RB

JB

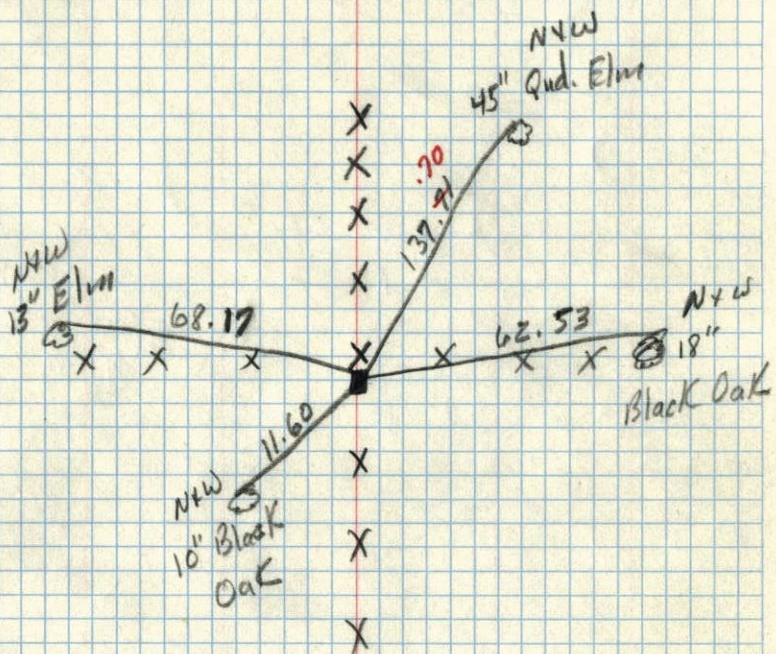
BA

June 22, 1971

Nail & Washer  
4" Elm



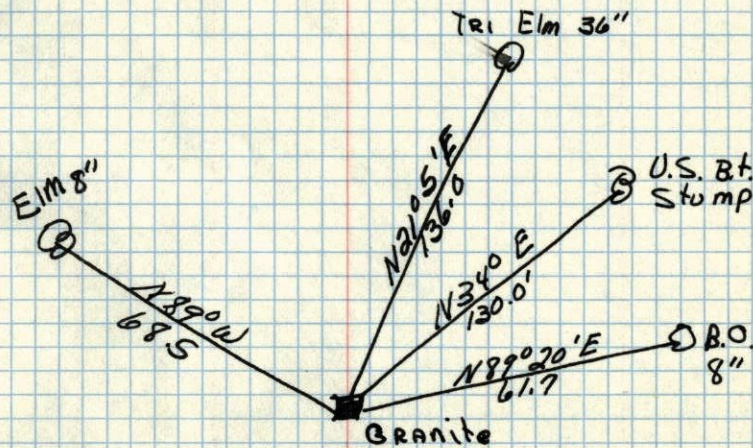
E 1/4 Cor. Sec. 29 + 32 R23  
 Granite Stone Up. .8'



9/22/60

7C  
 temp. 60  
 9/13/60  
 Bill Rogers  
 Ralph Robinson

E 1/4 cor. of Sec. 29 T.32 R.23  
 Granite up .8 at fence Cor. N.S.E.W.



JAN. 12, 1975  
 CARTER RIGHT